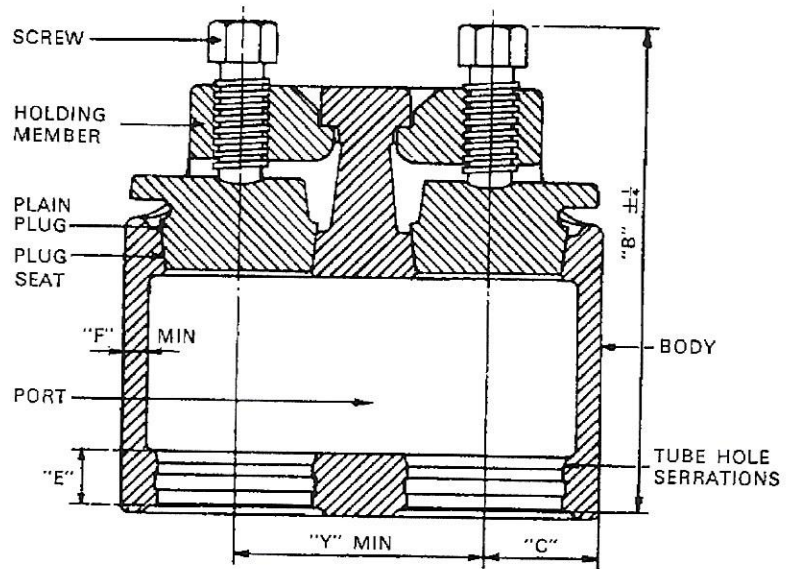


# Key type 6150

RAPID RESPONSE CAST PRODUCTS  
 LTD  
 WEST MIDLAND HOUSE, GIPSY LANE,  
 WILLENHALL,  
 WEST MIDLAND, UNITED KINGDOM  
 WV13 2HA, ENGLAND  
 TELE: +44 121 609 7286  
 FAX: +44 121 609 7287



For Welding Type fittings see page 9 .

## DIMENSIONS (inches)

The dimensions on these charts are standard. Any deviation will alter the operating limitations and require special designing throughout. The designs provide for small plugs. Consult L&E for fittings larger than 6" (152mm) in the 1275 lb. and 1700 lb. Series and larger than 5" (127mm) in the 2000 lb. Series. These Return Bend Fittings can be made with large plugs for the pressures and temperatures shown on the chart, page 16. Consult L&E. It is important to check the metal thickness of the fitting at the tube hole section if the tubes are heavier than the maximum indicated below.

**Note:** Any increase in dimension E, or the addition of a tube stop, must be added to dimension B.

**IMPORTANT:** Certain limitations must be applied in regard to the maximum tube I.D.'s as follows:

Fitting size

3" 3½" 4" 4½" 5" 5½"/5¾" 6" 6½"  
 mm 76 89 102 114 127 140/141 152 168

Max. tube I.D.

2⅝" 3⅝" 3½" 4" 4⅝" 5½" 5⅝" 6⅝"  
 mm 66 79 89 102 117 130 143 156

### 500 LB. SERIES

SIZE	Y	B	C	E	F	*MAX. TUBE WALL
3	5	11½	2⅝	1¼	½	⅜
3½	5½	12½	2⅞	1⅝	½	⅜
4	6	13⅝	2⅞	1½	½	⅜
4½	6⅝	14⅝	3⅝	1⅝	⅞	⅜
5	7⅝	15⅝	3⅝	1⅞	⅞	⅜
5½	7⅞	16⅝	3⅝	1⅞	⅞	⅜
6	8½	17⅝	3⅝	2	⅞	⅜
6⅝	8⅝	19⅝	4⅝	2⅝	⅞	⅜

### 850 LB. SERIES

2	4½	9⅝	1⅝	1	⅞	⅞
2½	4⅝	11⅝	2⅞	1⅝	⅞	⅞
3	5½	12⅝	2⅞	1½	⅞	⅞
3½	5⅝	13⅝	2⅞	1⅝	⅞	⅞
4	6½	13⅝	3	1⅝	⅞	⅞
4½	7⅝	14⅝	3⅝	1⅝	⅞	⅞
5	7⅝	16	3⅝	1⅞	⅞	⅞
5½	8½	17⅝	3⅝	1⅞	⅞	⅞
6	9	18⅝	4⅝	2	⅞	⅞
6⅝	9½	19⅝	4⅝	2⅝	⅞	⅞

### 1275 LB. SERIES

SIZE	Y	B	C	E	F	*MAX. TUBE WALL
2	4⅝	10	2	1½	⅞	⅞
2½	5	10⅝	2⅞	1⅝	⅞	⅞
3	5½	11⅝	2⅞	1½	⅞	⅞
3½	6⅝	13⅝	2⅞	1⅝	⅞	⅞
4	6⅝	14⅝	3⅝	1⅝	⅞	⅞
4½	7⅝	15⅝	3⅞	1⅝	⅞	⅞
5	8	16⅝	3⅞	2	⅞	⅞
5½	8⅝	18⅝	4⅝	2⅝	1	⅞
6	9½	19⅝	4½	2½	1⅝	⅞

### 1700 LB. SERIES

2	4⅝	10¼	2½	1½	⅞	⅞
2½	5½	11½	2⅞	1⅝	⅞	⅞
3	5⅝	12⅝	2⅞	1⅝	⅞	⅞
3½	6½	13⅝	3⅞	1⅝	⅞	⅞
4	7⅝	15⅝	3⅞	2	1	⅞
4½	7⅝	16⅝	3⅞	2⅝	1⅝	⅞
5	8½	18⅝	4	2½	1⅝	⅞
5½	9½	19⅝	4⅞	2⅝	1⅝	⅞
6	9⅝	20⅝	4⅝	2½	1⅝	⅞

### 2000 LB. SERIES

2	4⅞	10⅝	2½	1½	⅞	⅞
2½	5½	12⅝	2⅞	1⅝	⅞	⅞
3	6⅝	13⅝	2⅞	2	1	⅞
3½	6⅝	15⅝	3⅞	2⅝	1⅝	⅞
4	7⅝	16⅝	3⅞	2⅝	1⅝	⅞
4½	8⅝	18⅝	3⅞	2⅝	1⅝	⅞
5	8⅝	19⅝	4⅝	2½	1⅝	⅞

\*"Maximum tube wall" is the recommended maximum wall thickness of tubes that can be rolled into fittings without setting up excessive stresses in the tube hole area. If heavier wall tubes are to be used, additional

metal must be added to the tube rolling section or a heavier series selected, increasing the minimum centres in either case. Consult L&E

for maximum operating pressures and temperatures see chart on page 16